

611

2+kk
46,3 sqm
1st floor



CONNECT
VRŠOVICE

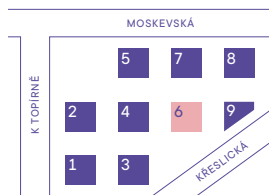


BUILDING

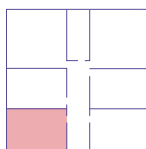


Number	Room	sqm
1	Hallway	4,3
2	Bathroom	4,9
3	Living room + kitchen corner	22,3
4	Bedroom	12,5
Usable area		44,0
Other areas, internal walls		2,3
Floor area of the apartment		46,3
Garden		87,1
5	Terrace	16,2
Total floor area		149,6

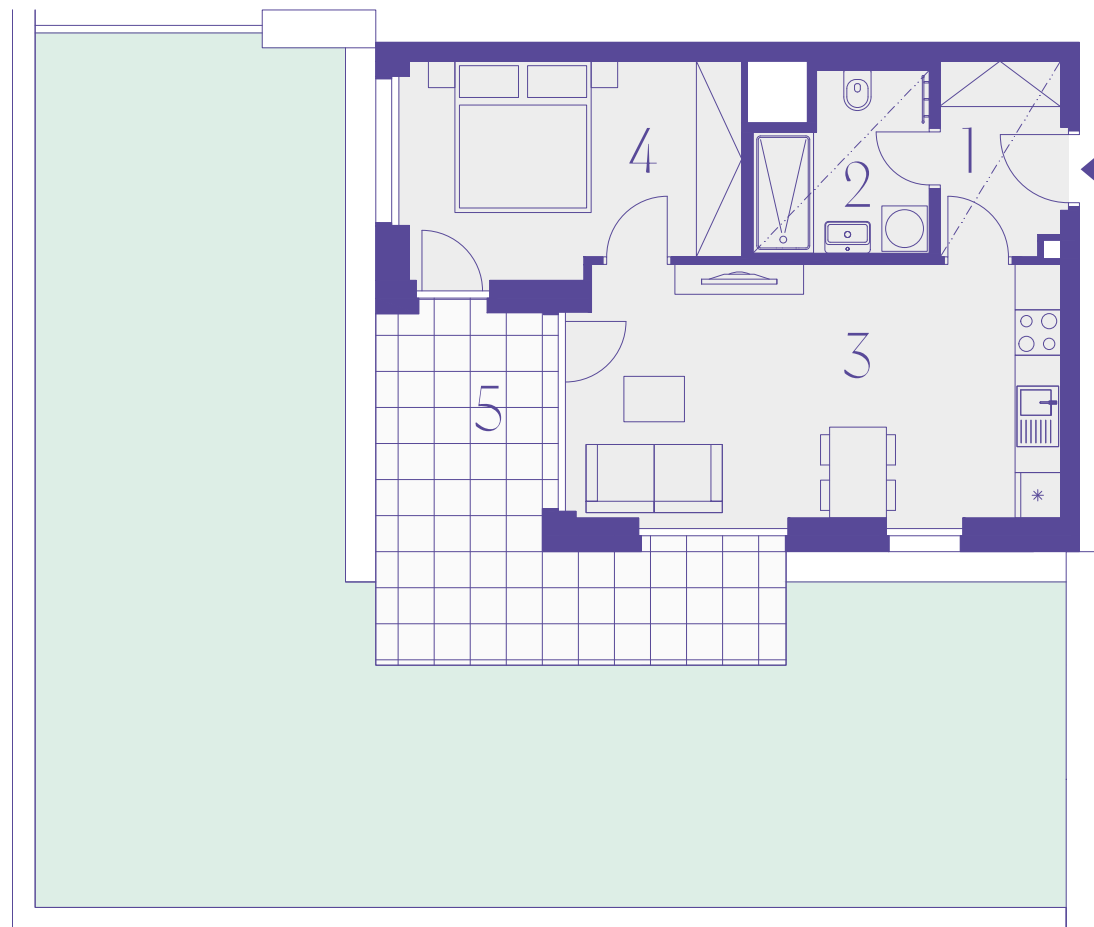
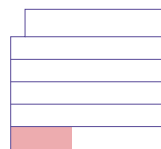
Project Scheme



Location on floor



View of the House



800 226 223

CONNECTVRŠOVICE.CZ

The room dimensions and other details listed here are approximate and non-binding. The furnishings and furniture depicted in the residential/commercial space are not included in any sale. The exact scope is specified in the sales contract. The investor reserves the right to make adjustments

NEOCITY
+
DARAMIS