

614

1+kk
24,9 sqm
1st floor



CONNECT
VRŠOVICE

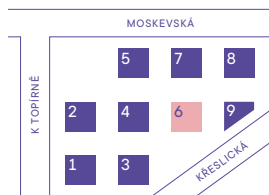


BUILDING

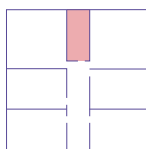


Number	Room	sqm
1	Hallway	4,1
2	Bathroom	3,1
3	Living room + kitchen corner	16,3
Usable area		23,5
Other areas, internal walls		1,4
Floor area of the apartment		24,9
Garden		13,9
4	Terrace	3,3
Total floor area		42,1

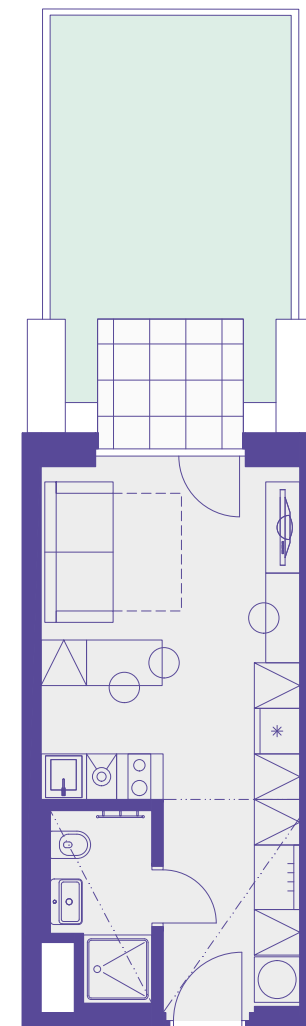
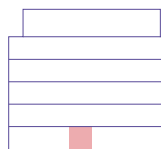
Project Scheme



Location on floor



View of the House



----- lowered ceiling



0 1 m 2 m 5 m

800 226 223

CONNECTVRŠOVICE.CZ

The room dimensions and other details listed here are approximate and non-binding. The furnishings and furniture depicted in the residential/commercial space are not included in any sale. The exact scope is specified in the sales contract. The investor reserves the right to make adjustments

NEOCITY
+
DARAMIS