

711

3+kk
70,3 sqm
1st floor



CONNECT
VRŠOVICE

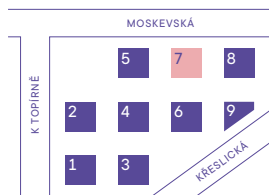


BUILDING

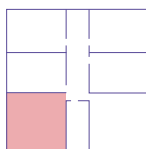


Number	Room	sqm
1	Hallway	12,4
2	WC	1,6
3	Bathroom	5,3
4	Living room + kitchen corner	25,9
5	Bedroom	8,9
6	Bedroom	13,0
Usable area		67,1
Other areas, internal walls		3,2
Floor area of the apartment		70,3
Garden		99,7
7	Terrace	13,2
Total floor area		183,2

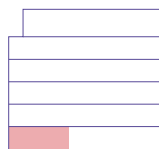
Project Scheme



Location on floor



View of the House



800 226 223

CONNECTVRŠOVICE.CZ

The room dimensions and other details listed here are approximate and non-binding. The furnishings and furniture depicted in the residential/commercial space are not included in any sale. The exact scope is specified in the sales contract. The investor reserves the right to make adjustments

NEOCITY
+
DARAMIS