

954

4+kk

165,2 sqm

5th + 6th floor



CONNECT
VRŠOVICE

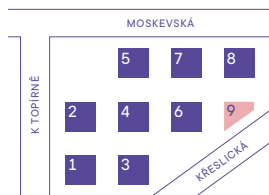


BUILDING

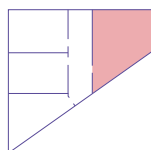


Number	Room	sqm
1	Hallway	6,1
2	Hallway	10,7
3	Bedroom	9,6
4	Bedroom	9,5
5	Bedroom	16,9
6	Bathroom	5,1
7	Wardrobe	3,8
Usable area - 5.podlaží		61,7
Other areas, internal walls		2,1
Floor area of the apartment -		63,8
Floor area of the apartment -		165,2
8	Balcony	4,6
Total floor area - 5th floor		68,4
Total floor area		320,6

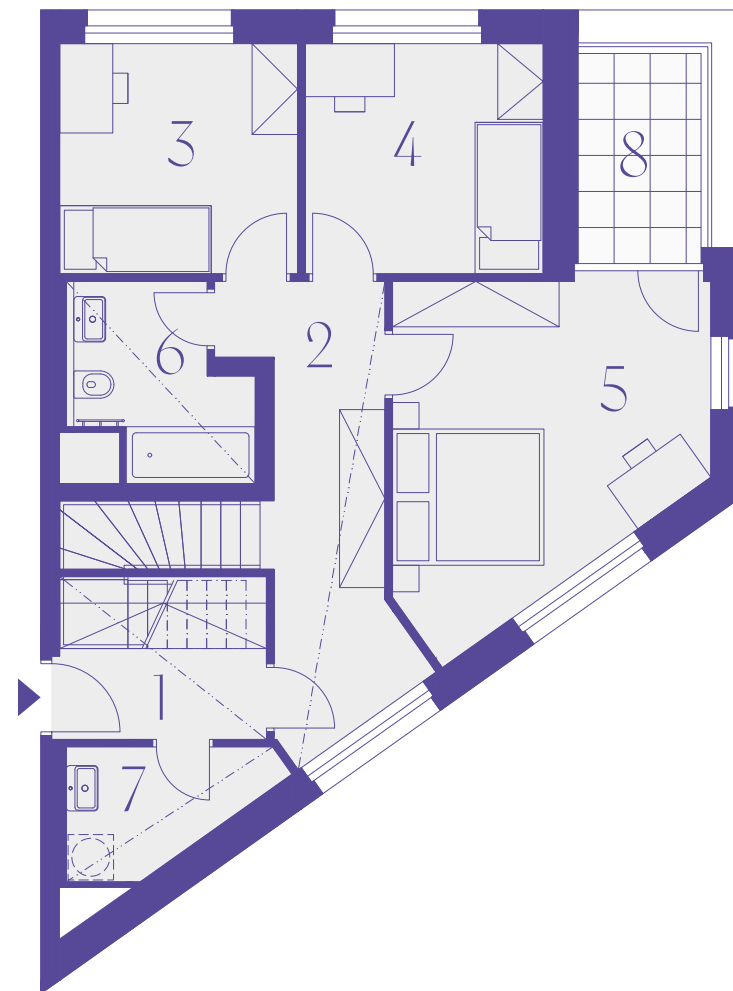
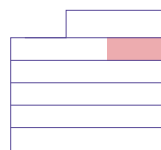
Project Scheme



Location on floor



View of the House



800 226 223

CONNECTVRŠOVICE.CZ

The room dimensions and other details listed here are approximate and non-binding. The furnishings and furniture depicted in the residential/commercial space are not included in any sale. The exact scope is specified in the sales contract. The investor reserves the right to make adjustments

NEOCITY
+
DARAMIS

954

4+kk

165,2 sqm

5th + 6th floor



CONNECT
VRŠOVICE

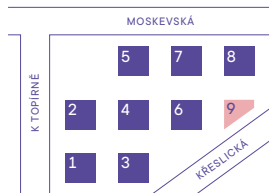


BUILDING

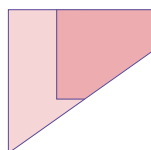


Number	Room	sqm
9	Hallway	14,2
10	Living room + kitchen corner	72,3
11	Bathroom	3,9
12	WC	2,0
13	Hallway	5,8
Usable area - 6.podlaží		98,2
Other areas, internal walls		3,2
Floor area of the apartment -		101,4
Floor area of the apartment -		165,2
14	Balcony	4,6
15	Terrace	146,2
Total floor area - 6.podlaží		252,2
Total floor area		320,6

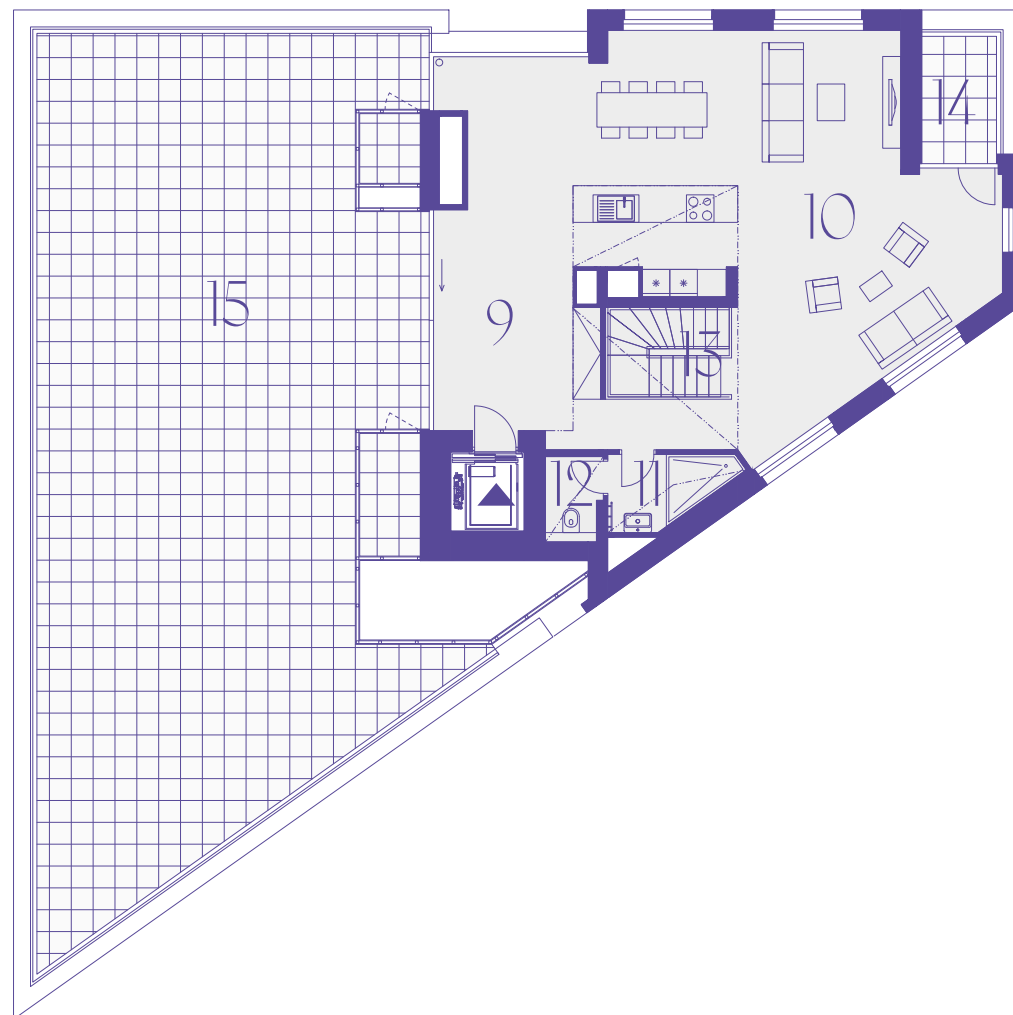
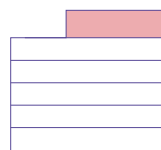
Project Scheme



Location on floor



View of the House



800 226 223

CONNECTVRŠOVICE.CZ

The room dimensions and other details listed here are approximate and non-binding. The furnishings and furniture depicted in the residential/commercial space are not included in any sale. The exact scope is specified in the sales contract. The investor reserves the right to make adjustments

